



www.greatwesternindustrialpark.com

COLORADO'S MOST DYNAMIC RAIL SERVED INDUSTRIAL PARK AND LOGISTICS HUB



2 TO 200 ACRE INDUSTRIAL AND DUAL RAIL SERVED SITES FOR SALE, LEASE OR BTS

Home to:

Vestas

HALLIBURTON



Cargill

Carestream

Schlumberger



**Newmark Grubb
Knight Frank**

For Sale or Lease Information Please Call:

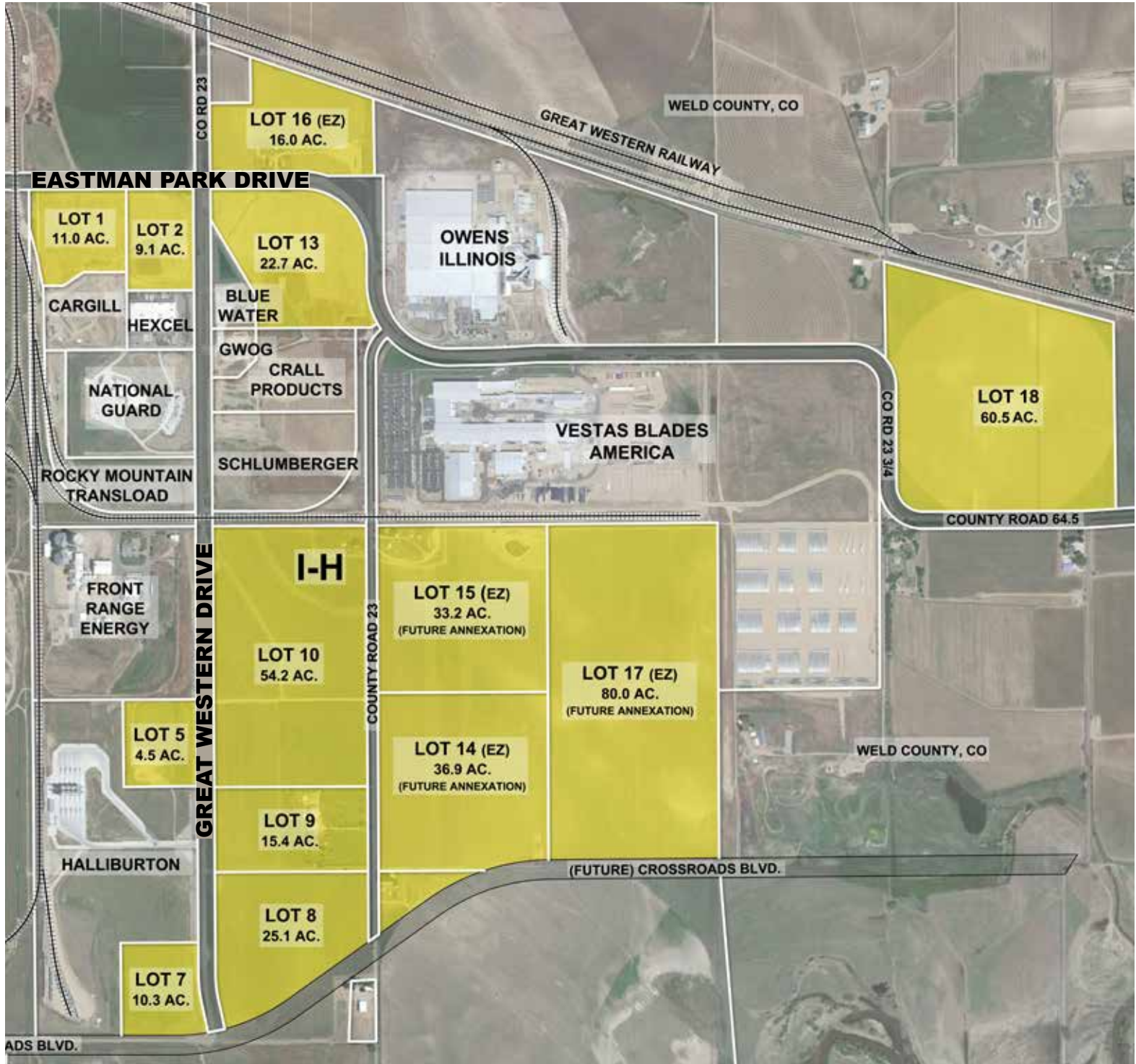
Mike Wafer, SIOR
mwafer@ngkf.com
303.260.4242

Tim D'Angelo, SIOR
tdangelo@ngkf.com
303.260.4252

Michael Wafer Jr.
mwaferjr@ngkf.com
303.260.4407

DEVELOPED BY

OmniTRAX



As one of North America's largest private railroad and transportation management companies, OmniTRAX's core capabilities range from providing management services to railroad and port services and to intermodal and industrial switching operations. Through its affiliation with The Broe Group and its portfolio of managed companies, OmniTRAX also has the unique capability of offering specialized industrial development and real estate solutions, both on and off the rail network managed by OmniTRAX. More information is available at www.omnitrax.com.

